

**Treasury Management Update Report 2023/24 and
Treasury Management Strategy 2024/25 - APPENDIX B**

Treasury Management Strategy 2024/25
(including Minimum Revenue Provision Statement
2024/25 & Treasury Management Policy
Statement 2024/25)

Telford & Wrekin Council

A glossary and list of abbreviations used in this report can be found at page 54

Contents

Purpose	3
1.0 Background & Context	4
2.0 The Capital Prudential Indicators 2024/25 – 2026/24	6
3.0 Borrowing	9
4.0 Annual Investment Strategy	17
5.0 Minimum Revenue Provision Statement 2024/25	26
6.0 Treasury Management Policy Statement 2024/25	27
7.0 Other Items	29
Appendix Bi: Existing Treasury Portfolio Projected Forwards	31
Appendix Bii: Capital and Treasury Management Prudential Indicators 2024/25	32
Appendix Biii Interest Rate Forecasts & Economic Background	37
Appendix Biv: Credit and Counterparty Risk Management	42
Appendix Bv: Approved Countries for Investments	44
Appendix Bvi: Treasury Management Scheme of Delegation and Treasury Management Role of the Section 151 Officer	45
Appendix Bvii: Ethic Investment Framework	47
Appendix Bviii: Credit Ratings – A Guide	51
Appendix Bix: Glossary & Abbreviations	54

Treasury Management Strategy 2024/25

Purpose

This Council is required by regulations issued under the Local Government Act 2003 to produce an annual treasury management strategy for 2024/25. This report meets the requirements of both the CIPFA Code of Practice on Treasury Management, (the Code), and the CIPFA Prudential Code for Capital Finance in Local Authorities, (the Prudential Code).

During 2024/25 the minimum reporting requirements are that the Full Council should receive the following reports:

- an annual treasury strategy in advance of the year (this report),
- a mid-year, (minimum), treasury update report, and
- an annual review following the end of the year describing the activity compared to the strategy.

The regulatory environment places responsibility on members for the review and scrutiny of treasury management policy and activities. This report is, therefore, important in that respect, as it provides details of the outturn position for treasury activities and highlights compliance with the Council's policies previously approved by members.

This Council confirms that it has complied with the requirement under the Code to give prior scrutiny to all of the above treasury management reports by the Audit Committee before they were reported to the Full Council. Member training on treasury management issues was undertaken in July 2023 and January 2024 in order to support members' scrutiny role.

1.0 BACKGROUND & CONTEXT

1.1 Background

The Authority is required to operate a balanced budget, which broadly means that cash raised during the year will meet cash expenditure. Part of the treasury management operation is to ensure that this cash flow is adequately planned, with cash being available when it is needed. Surplus monies are invested in low-risk counterparties or instruments commensurate with the Authority's low risk appetite, providing adequate liquidity initially before considering investment return.

The second main function of the treasury management service is the funding of the Authority's capital plans. These capital plans provide a guide to the borrowing need of the Authority, essentially the longer-term cash flow planning, to ensure that it can meet its capital spending obligations. This management of longer-term cash may involve arranging long or short-term loans or using longer-term cash flow surpluses. On occasion, when it is prudent and economic, any debt previously drawn may be restructured to meet risk or cost objectives.

The contribution the treasury management function makes to the Authority is critical, as the balance of debt and investment operations ensure liquidity or the ability to meet spending commitments as they fall due, either on day-to-day revenue or for larger capital projects. The treasury operations will see a balance of the interest costs of debt and the investment income arising from cash deposits affecting the available budget. Since cash balances generally result from reserves and balances, it is paramount to ensure adequate security of the sums invested, as a loss of principal will in effect result in a loss to the General Fund Balance.

CIPFA defines treasury management as:

“The management of the local authority's borrowing, investments and cash flows, including its banking, money market and capital market transactions; the effective control of the risks associated with those activities; and the pursuit of optimum performance consistent with those risks.”

Whilst any commercial initiatives or loans to third parties will impact on the treasury function, these activities are generally classed as non-treasury activities, (arising usually from capital expenditure), and are separate from the day-to-day treasury management activities.

1.2 Reporting Requirements

Capital Strategy

The CIPFA 2021 Prudential and Treasury Management Codes require all local authorities to prepare a Capital Strategy report which will provide the following:

- a high-level long-term overview of how capital expenditure, capital financing and treasury management activity contribute to the provision of services
- an overview of how the associated risk is managed
- the implications for future financial sustainability

The aim of the strategy is to ensure that all the Authority's elected members fully understand the overall long-term policy objectives and resulting Capital Strategy requirements, governance procedures and risk appetite. The Council's Capital Strategy is included as part of the suite of Medium Term Financial Strategy (MTFS) reports which are approved by Full Council each year.

Treasury Management Reporting

The Authority is currently required to receive and approve, as a minimum, three main treasury reports each year, which incorporate a variety of policies, estimates and actuals.

- a. Prudential and treasury indicators and treasury strategy (this report) - The first, and most important report is forward looking and covers: -
 - the capital plans, (including prudential indicators)
 - a minimum revenue provision (MRP) policy, (how capital expenditure funded by borrowing is charged to revenue over time)
 - the Treasury Management Strategy, (how the investments and borrowings are to be organised), including treasury indicators; and
 - an Annual Investment Strategy, (the parameters on how investments are to be managed)
- b. A mid-year treasury management report – This is primarily a progress report and will update members on the capital position, amending prudential indicators as necessary, and whether any policies require revision.
- c. An annual treasury report – This is a backward-looking review document and provides details of a selection of actual prudential and treasury indicators and actual treasury operations compared to the estimates within the strategy.

Scrutiny - the above reports are required to be adequately scrutinised before being recommended to the Full Council. This role is undertaken by the Audit Committee.

Other reports – The above reports will be supplemented by updates as part of the financial monitoring taken to Cabinet.

1.3 Treasury Management Strategy for 2024/25

The strategy for 2024/25 covers two main areas:

Capital issues

- the capital expenditure plans and the associated prudential indicators
- the minimum revenue provision (MRP) policy

Treasury management issues

- the current treasury position
- treasury indicators which limit the treasury risk and activities of the Authority
- prospects for interest rates
- the borrowing strategy
- policy on borrowing in advance of need
- debt rescheduling
- the investment strategy
- creditworthiness policy; and
- the policy on use of external service providers

These elements cover the requirements of the Local Government Act 2003, Department of Levelling Up, Housing and Communities (DLUHC) Investment Guidance, DLUHC MRP Guidance, the CIPFA Prudential Code and the CIPFA Treasury Management Code.

2.0 THE CAPITAL PRUDENTIAL INDICATORS 2024/25 – 2026/27

The Authority's capital expenditure plans are the key driver of treasury management activity. The output of the capital expenditure plans is reflected in the prudential indicators, which are designed to assist members' overview and confirm capital expenditure plans.

2.1 Capital Expenditure and Financing

This prudential indicator is a summary of the Authority's capital expenditure plans, both those agreed previously, and those forming part of this budget cycle. Members are asked to approve the capital expenditure forecasts: -

Capital expenditure (£m)	2022/23 Actual	2023/24 Estimate	2024/25 Estimate	2025/26 Estimate	2026/27 Estimate
General Fund Services	59.579	70.766	105.865	46.097	12.718
Housing Investment Programme (NuPlace)	4.571	10.782	40.700	30.155	16.470
Property Investment Portfolio	10.920	7.169	31.421	18.726	5.452
Telford Land Deal	0.634	1.330	1.812	3.108	0.000
Total	75.704	90.047	179.798	98.086	34.640

Other long-term liabilities - the above financing need excludes other long-term liabilities, such as PFI and leasing arrangements that already include borrowing instruments.

The table below summarises the above capital expenditure plans and how these plans are being financed by capital or revenue resources. Any shortfall of resources results in a funding borrowing need.

Financing of capital expenditure (£m)	2022/23 Actual	2023/24 Estimate	2024/25 Estimate	2025/26 Estimate	2026/27 Estimate
Capital receipts	13.598	0.774	7.556	0.000	6.000
Capital grants	28.775	43.432	44.061	19.292	0.207
Revenue	1.158	1.678	1.058	0.067	0.000
External	6.920	2.067	9.250	3.008	0.000
Net financing need for the year	25.253	42.096	117.873	75.719	28.433

2.2 The Authority's Borrowing Need (the Capital Financing Requirement)

The second prudential indicator is the Authority's Capital Financing Requirement (CFR). The CFR is simply the total historic outstanding capital expenditure which has not yet been paid for from either revenue or capital resources. It is essentially a measure of the Authority's indebtedness and so it's underlying borrowing need. Any capital expenditure above, which has not immediately been paid for through a revenue or capital resource, will increase the CFR.

The CFR does not increase indefinitely, as the minimum revenue provision (MRP) is a statutory annual revenue charge which broadly reduces the indebtedness in line with each asset's life, and so charges the economic consumption of capital assets as they are used.

The CFR includes any other long-term liabilities (e.g., PFI schemes, finance leases). Whilst these increase the CFR, and therefore the Authority's borrowing requirement, these types of schemes include a borrowing facility by the PFI, PPP lease provider and so the Authority is not required to separately borrow for these schemes. The Authority currently has £44.2m of such schemes within the CFR (31/3/23).

The Committee is asked to approve the CFR projections below:

Capital Financing Requirement (£m)	2022/23 Actual	31.3.2024 Estimate	31.3.2025 Estimate	31.3.2026 Estimate	31.3.2027 Estimate
Capital Financing Requirement					
General Fund Service	393.380	414.801	456.459	482.933	487.621
Housing Investment Programme (NuPlace Ltd)	63.544	74.326	115.026	145.181	161.651
Property Investment Portfolio	59.963	65.906	96.315	115.040	120.492
Solar Farm	3.800	3.800	3.800	3.800	3.800
Total CFR	520.687	558.833	671.600	742.854	769.146

Capital Financing Requirement (£m)	2022/23 Actual	31.3.2024 Estimate	31.3.2025 Estimate	31.3.2026 Estimate	31.3.2027 Estimate
Movement in CFR		38.146	112.767	71.254	26.292

2.3 Liability Benchmark

The Authority is required to estimate and measure the Liability Benchmark (LB) for the forthcoming financial year and the following two financial years, as a minimum although CIPFA strongly recommends that the Liability Benchmark is produced for at least 10 years and should ideally cover the full debt maturity profile.

There are four components to the LB: -

- Existing loan debt outstanding: the Authority's existing loans that are still outstanding in future years.
- Loans CFR: this is calculated in accordance with the loans CFR definition in the Prudential Code and projected into the future based on approved prudential borrowing and planned MRP.
- Net loans requirement: this will show the Authority's gross loan debt less treasury management investments at the last financial year-end, projected into the future and based on its approved prudential borrowing, planned MRP and any other major cash flows forecast.
- Liability benchmark (or gross loans requirement): this equals net loans requirement plus short-term liquidity allowance.

The full Liability Benchmark is included at Appendix Bii.

2.4 Capital and Treasury Management Prudential Indicators

There is a requirement under the Local Government Act 2003 for local authorities to have regard to CIPFA's Prudential Code for Capital Finance in Local Authorities (the "CIPFA Prudential Code") when setting and reviewing their Treasury Management and Prudential Indicators. These indicators are used to measure and manage the Authority's measures exposure to treasury management risks including –

- Capital Expenditure & Financing
- Capital Financing Requirement (CFR)
- Limits to Borrowing Activity
- Liability Benchmark
- Security
- Liquidity
- Interest Rate Exposure
- Maturity Structure of Fixed Rate Borrowing
- Principle sums invested for periods longer than a year

Capital and Treasury Management Prudential Indicators are detailed in Appendix Bii.

3.0 BORROWING

The capital expenditure plans set out in Section 2 provide details of the service activity of the Authority. The treasury management function ensures that the Authority's cash is organised in accordance with the relevant professional codes, so that sufficient cash is available to meet this service activity and the Authority's Capital Strategy. This will involve both the organisation of the cash flow and, where capital plans require, the organisation of appropriate borrowing facilities. The strategy covers the relevant treasury / prudential indicators, the current and projected debt positions, and the Annual Investment Strategy.

3.1 Current Portfolio Position

The overall treasury management portfolio as at 31.3.23 and estimated position as at 31.3.24 are shown below for both borrowing and investments.

Treasury Portfolio	31.3.23 Actual	31.3.23 Actual	31.03.24 Estimate	31.03.24 Estimate
Treasury investments	£000	%	£000	%
Banks	4,419	10.6	2,500	16.7
Money Market Funds	4,980	13.1	4,980	33.2
H.M. Treasury's Debt Management Account Deposit Facility (DMADF)	29,100	76.3	7,520	50.1
Total treasury investments	38,499	100.0	15,000	100.0
Treasury external borrowing				
Local Authorities	96,029	27.7	100,029	26.6
PWLB	210,884	60.7	235,544	62.7
Market Loans	15,000	4.3	15,000	4.0
LOBOs	25,000	7.2	25,000	6.7
Municipal Loans	308	0.1	245	0.0
Total external borrowing	347,221	100.0	375,818	100.0
Net treasury investments / (borrowing)	(309,099)		(360,818)	

The Authority's forward projections for borrowing are summarised below. The table shows the actual external debt, against the underlying capital borrowing need, (the Capital Financing Requirement - CFR), highlighting any over or under borrowing.

External Financing & Investments (£m)	31.3.23 Actual	31.3.24 Estimate	31.3.25 Estimate	31.3.26 Estimate	31.3.27 Estimate
Total External Borrowing	347.2	375.8	493.7	569.4	597.8
Other Long Term Liabilities	44.2	44.6	41.2	38.4	38.1

External Financing & Investments (£m)	31.3.23 Actual	31.3.24 Estimate	31.3.25 Estimate	31.3.26 Estimate	31.3.27 Estimate
Total Gross External Debt	391.4	420.4	534.9	607.8	635.9
The Capital Finance Requirement	520.7	558.8	671.6	742.9	769.1
Under / (over) borrowing	129.3	138.4	136.7	135.1	133.2

Within the range of prudential indicators there are several key indicators to ensure that the Authority operates its activities within well-defined limits. One of these is that the Authority needs to ensure that its gross debt does not, except in the short-term, exceed the total of the CFR in the preceding year plus the estimates of any additional CFR for 2024/25 and the following two financial years. This allows some flexibility for limited early borrowing for future years but ensures that borrowing is not undertaken for revenue or speculative purposes.

The Interim Director of Finance reports that the Authority complied with this prudential indicator in the current year and does not envisage difficulties for the future. This view takes account of current commitments, existing plans and the proposals in this budget report.

3.2 Treasury Indicators: Limits to Borrowing Activity

The Operational Boundary: This is the limit beyond which external debt is not normally expected to exceed. In most cases, this would be a similar figure to the CFR, but may be lower or higher depending on the levels of actual debt and the ability to fund under-borrowing by other cash resources.

The Committee is asked to approve the following Operational Boundary:

Operational Boundary (£m)	2023/24 Estimate	2024/25 Estimate	2025/26 Estimate	2026/27 Estimate
Debt	475.0	635.0	725.0	745.0
Other long-term liabilities	50.0	50.0	50.0	50.0
Total	525.0	685.0	775.0	795.0

The Authorised Limit for external debt: This is a key prudential indicator and represents a control on the maximum level of borrowing. This represents a legal limit beyond which external debt is prohibited, and this limit needs to be set or revised by the Full Council. It reflects the level of external debt which, while not desired, could be afforded in the short-term, but is not sustainable in the longer-term.

This is the statutory limit determined under section 3 (1) of the Local Government Act 2003. The Government retains an option to control either the total of all local authority plans, or those of a specific authority, although this power has not yet been exercised.

The Committee is asked to approve the following Authorised Limit:

Authorised Limit £m	2023/24 Estimate	2024/25 Estimate	2025/26 Estimate	2026/27 Estimate
Debt	495.0	655.0	745.0	765.0
Other long-term liabilities	54.0	54.0	54.0	54.0
Total	549.9	709.0	799.0	819.0

3.3 Prospects for Interest Rates and commentary (provided by Link)

The Authority has appointed Link Group as its treasury advisor and part of their service is to assist the Authority to formulate a view on interest rates. Link provided the following forecasts on 08 January 2024. These are forecasts for Bank Rate, average earnings and PWLB certainty rates, gilt yields plus 80 bps.

Link Group Interest Rate View 08.01.24													
	Mar-24	Jun-24	Sep-24	Dec-24	Mar-25	Jun-25	Sep-25	Dec-25	Mar-26	Jun-26	Sep-26	Dec-26	Mar-27
BANK RATE	5.25	5.25	4.75	4.25	3.75	3.25	3.00	3.00	3.00	3.00	3.00	3.00	3.00
3 month ave earnings	5.30	5.30	4.80	4.30	3.80	3.30	3.00	3.00	3.00	3.00	3.00	3.00	3.00
6 month ave earnings	5.20	5.10	4.60	4.10	3.70	3.30	3.10	3.10	3.10	3.10	3.10	3.10	3.10
12 month ave earnings	5.00	4.90	4.40	3.90	3.60	3.20	3.10	3.10	3.10	3.10	3.10	3.20	3.20
5 yr PWLB	4.50	4.40	4.30	4.20	4.10	4.00	3.80	3.70	3.60	3.60	3.50	3.50	3.50
10 yr PWLB	4.70	4.50	4.40	4.30	4.20	4.10	4.00	3.90	3.80	3.70	3.70	3.70	3.70
25 yr PWLB	5.20	5.10	4.90	4.80	4.60	4.40	4.30	4.20	4.20	4.10	4.10	4.10	4.10
50 yr PWLB	5.00	4.90	4.70	4.60	4.40	4.20	4.10	4.00	4.00	3.90	3.90	3.90	3.90

- Our central forecast for interest rates was previously updated on 25 September and reflected a view that the MPC would be keen to further demonstrate its anti-inflation credentials by keeping Bank Rate at 5.25% until at least H2 2024. We expect rate cuts to start when both the CPI inflation and wage/employment data are supportive of such a move, and that there is a likelihood of the overall economy enduring at least a mild recession over the coming months (although most recent GDP releases have surprised with their on-going robustness).
- Naturally, timing on this matter will remain one of fine judgment: cut too soon, and inflationary pressures may well build up further; cut too late and any downturn or recession may be prolonged.
- In the upcoming months, our forecasts will be guided not only by economic data releases and clarifications from the MPC over its monetary policies and the Government over its fiscal policies, but also international factors such as policy development in the US and Europe, the provision of fresh support packages to support the faltering recovery in China as well as the on-going conflict between Russia and Ukraine, and Gaza and Israel.

PWLB Rates

- The short and medium part of the gilt curve has rallied since the start of November as markets price in a quicker reduction in Bank Rate through 2024 and 2025 than held sway back then. This reflects market confidence in inflation falling back in a similar manner to that already seen in the US and the Euro-zone. At the time of writing there is c70 basis points difference between the 5 and 50 year parts of the curve.

The balance of risks to the UK economy: -

- The overall balance of risks to economic growth in the UK is even.

Downside risks to current forecasts for UK gilt yields and PWLB rates include: -

- **Labour and supply shortages** prove more enduring and disruptive and depress economic activity (accepting that in the near-term this is also an upside risk to inflation and, thus, could keep gilt yields high for longer).
- **The Bank of England** has increased Bank Rate too fast and too far over recent months, and subsequently brings about a deeper and longer UK recession than we currently anticipate.
- **Geopolitical risks**, for example in Ukraine/Russia, the Middle East, China/Taiwan/US, Iran and North Korea, which could lead to increasing safe-haven flows.

Upside risks to current forecasts for UK gilt yields and PWLB rates: -

- Despite the tightening in Bank Rate to 5.25%, the **Bank of England allows inflationary pressures to remain elevated** for a long period within the UK economy, which then necessitates Bank Rate staying higher for longer than we currently project.
- **The pound weakens** because of a lack of confidence in the UK Government's pre-election fiscal policies, which may prove inflationary, resulting in investors pricing in a risk premium for holding UK sovereign debt.
- Projected **gilt issuance, inclusive of natural maturities and QT**, could be too much for the markets to comfortably digest without higher yields compensating.

Link Group Forecasts

We expect the MPC will keep Bank Rate at 5.25% until the second half of 2024, to combat on-going inflationary and wage pressures, even if they have dampened somewhat of late. We do not think that the MPC will increase Bank Rate above 5.25%.

Gilt yields and PWLB rates

The overall longer-run trend is for gilt yields and PWLB rates to fall back over the timeline of our forecasts, as inflation continues to fall through 2024.

Our target borrowing rates are set **two years forward** (as we expect rates to fall back) and the current PWLB (certainty) borrowing rates are set out below:

PWLB debt	Current borrowing rate as at 06.11.23 p.m.	Target borrowing rate now (end of Q3 2025)	Target borrowing rate previous (end of Q3 2025)
5 years	4.53%	3.70%	3.80%
10 years	4.67%	3.90%	3.80%
25 years	5.19%	4.20%	4.20%
50 years	4.97%	4.00%	4.00%

Borrowing advice: Our long-term (beyond 10 years) forecast for Bank Rate remains at 3% and reflects Capital Economics' research that suggests AI and general improvements in productivity will be supportive of a higher neutral interest rate. As all PWLB certainty rates are currently significantly above this level, borrowing strategies will need to be reviewed in that context. Overall, better value can be obtained at the shorter end of the curve and short-dated fixed LA to LA monies should be considered. Temporary borrowing rates will remain elevated for some time to come but may prove the best option whilst the market continues to factor in Bank Rate reductions for 2024 and later.

Our suggested budgeted earnings rates for investments up to about three months' duration in each financial year are set out below:-

Average earnings in each year	Now	Previously
2023/24 (residual)	5.30%	5.30%
2024/25	4.55%	4.70%
2025/26	3.10%	3.20%
2026/27	3.00%	3.00%
2027/28	3.25%	3.25%
2028/29	3.25%	3.25%
Years 6 to 10	3.25%	3.25%
Years 10+	3.25%	3.25%

As there are so many variables at this time, caution must be exercised in respect of all interest rate forecasts.

Our interest rate forecast for Bank Rate is in steps of 25 bps, whereas PWLB forecasts have been rounded to the nearest 10 bps and are central forecasts within bands of + / - 25 bps. Naturally, we continue to monitor events and will update our forecasts as and when appropriate.

3.4 Borrowing Strategy

The Authority holds £350.743m of loans as at 31 December 2023, an increase of £3.522 on the end of the previous financial year. It is anticipated that the total cumulative borrowing will increase to £375.8m by the end of 2023/24 in line with the approved Capital Programme.

The Authority is currently maintaining an under-borrowed position. This means that the capital borrowing need, (the Capital Financing Requirement), has not been fully funded with loan debt as cash supporting the Authority's reserves, balances and cash flow has been used as a temporary measure. This strategy is prudent as medium and longer dated borrowing rates are expected to fall from their current levels once prevailing inflation concerns are addressed by tighter near-term monetary policy. That is, Bank Rate remains elevated through to the second half of 2024.

Against this background and the risks within the economic forecast, caution will be adopted with the 2024/25 treasury operations. The Director of Finance & Human Resources will monitor interest rates in financial markets and adopt a pragmatic approach to changing circumstances:

- if it was felt that there was a significant risk of a sharp FALL in borrowing rates, then borrowing will be postponed.
- if it was felt that there was a significant risk of a much sharper RISE in borrowing rates than that currently forecast, fixed rate funding will be drawn whilst interest rates are lower than they are projected to be in the next few years.

Any decisions will be reported to the appropriate decision-making body at the next available opportunity.

Objectives: The Authority's chief objective when borrowing money is to strike an appropriately low risk balance between securing low interest costs and achieving certainty of those costs over the period for which funds are required. The flexibility to renegotiate loans should the Authority's long-term plans change is a secondary objective.

Strategy: Given the significant cuts to public expenditure and in particular to local government funding, the Authority's borrowing strategy continues to address the key issue of affordability without compromising the longer-term stability of the debt portfolio. With the forecast for interest rates anticipated to have peaked in September 2023 before starting to reduce from Quarter 3 2024 it is likely to be more cost effective in the short-term to either use internal resources, or to borrow through the use of short-term loans, up to 1 year.

By doing so, the Authority is able to reduce net borrowing costs (despite foregone investment income) and reduce overall treasury risk. Whilst such a strategy is most likely to be beneficial over the next year given to current interest rate forecast, over the medium-term we will make gradual moves into longer

term borrowing as and when attractive opportunities arise. The benefits of internal borrowing will be monitored regularly against the potential for incurring additional costs by deferring borrowing into future years. External advisors will assist the Authority with this 'cost of carry' and breakeven analysis. Its output may determine whether the Authority borrows additional sums at long-term fixed rates in 2024/25 with a view to keeping future interest costs low, even if this causes additional cost in the short-term.

Historically, the Authority has raised the majority of its short term borrowing from the Local to Local market i.e. Local Authorities lending to and borrowing from each other, and this is likely to remain a major source going forward. The Authority may also consider the option of borrowing short term from the PWLB.

Likewise, the Authority has raised the majority of its long-term borrowing from the PWLB and this is likely to be a major source of borrowing going forward. The Authority may also consider alternative options for borrowing any long-term loans, such as banks, pension funds and local authorities, and the possibility of issuing bonds and similar instruments, in order to lower interest costs and reduce over-reliance on one source of funding in line with the CIPFA Code. PWLB loans are no longer available to local authorities planning to buy investment assets primarily for yield; the Authority intends to avoid this activity in order to retain its access to PWLB loans.

Alternatively, the Authority may arrange forward starting loans, where the interest rate is fixed in advance, but the cash is received in later years. This would enable certainty of cost to be achieved without suffering a cost of carry in the intervening period.

In addition, the Authority may borrow further short-term loans to cover unplanned cash flow shortages.

Sources of Borrowing: The approved sources of long-term and short-term borrowing are:

- HM Treasury's PWLB lending facility (formerly PWLB)
- any institution approved for investments (see below)
- any other bank or building society authorised to operate in the UK
- any other UK public sector body
- UK public and private sector pension funds
- capital market bond investors
- UK Municipal Bonds Agency plc and other special purpose companies created to enable local authority bond issues
- Registered Housing providers
- Capital market bond investors
- Community Municipal Investments (Bond or Loan) raised from the general public (including a climate change investment opportunity).

Other sources of debt finance: In addition, capital finance may be raised by the following methods that are not borrowing, but may be classed as other debt liabilities:

- leasing
- hire purchase
- Private Finance Initiative
- sale and leaseback

Municipal Bonds Agency: UK Municipal Bonds Agency plc was established in 2014 by the Local Government Association as an alternative to the PWLB. It issues bonds on the capital markets and lends the proceeds to local authorities. This is a more complicated source of finance than the PWLB for two reasons: borrowing authorities will be required to provide bond investors with a guarantee to refund their investment in the event that the agency is unable to meet its obligations for any reason; and there will be a lead time of several months between committing to borrow and knowing the interest rate payable.

New Financial Institutions as a source of borrowing and or types of borrowing: Currently the PWLB Certainty Rate is set at gilts + 80 basis points. However, consideration may still need to be given to sourcing funding from the following sources for the following reasons:

- Local authorities (primarily shorter dated maturities out to 3 years or so – generally still cheaper than the Certainty Rate).
- Financial institutions (primarily insurance companies and pension funds but also some banks, out of forward dates where the objective is to avoid a “cost of carry” or to achieve refinancing certainty over the next few years).

Our advisors will keep us informed as to the relative merits of each of these alternative funding sources.

LOBOs: The Authority holds £25.0m (7.1% of the debt portfolio at 31 December 2023) of LOBO (Lender’s Option Borrower’s Option) loans where the lender has the option to propose an increase in the interest rate at set dates, following which the Authority has the option to either accept the new rate or to repay the loan at no additional cost. £20.0m of these LOBOs have remaining options prior to the end of the financial year, and although the Authority understands that lenders are very unlikely to exercise their options in the current low interest rate environment, there remains an element of refinancing opportunity. Rates payable were competitive compared to PWLB rates at the time that the loans were taken out. The Authority will take the option to repay LOBO loans at no cost if it has the opportunity to do so. Total borrowing via LOBO loans will not increase from the current £25.0m.

Short-term and variable rate loans: These loans leave the Authority exposed to the risk of short-term interest rate rises and are therefore subject to the

interest rate exposure limits in the treasury management indicators below. Financial derivatives may be used to manage this interest rate risk.

Borrowing in advance of need: The Council will not borrow more than or in advance of its needs purely in order to profit from the investment of the extra sums borrowed. Any decision to borrow in advance will be within forward approved Capital Financing Requirement estimates and will be considered carefully to ensure that value for money can be demonstrated and that the Council can ensure the security of such funds.

Risks associated with any borrowing in advance activity will be subject to prior appraisal and subsequent reporting through the mid-year or annual reporting mechanism.

Debt rescheduling: The PWLB allows authorities to repay loans before maturity and either pay a premium or receive a discount according to a set formula based on current interest rates. Other lenders may also be prepared to negotiate premature redemption terms. The Authority may take advantage of this and replace some loans with new loans, or repay loans without replacement, where this is expected to lead to an overall cost saving or a reduction in risk.

4.0 ANNUAL INVESTMENT STRATEGY

4.1 Investment Policy – Management of Risk

Investments that are not part of Treasury Management Activity

The Department of Levelling Up, Housing and Communities (DLUHC) and CIPFA have extended the meaning of ‘investments’ to include both financial and non-financial investments. This may include investment activity which is outside the purpose of normal treasury management. Public sector organisations may have investments for various purposes –

- **Investments for treasury management purposes** – are those investments that arise from the organisations cash flows or treasury risk management activity and ultimately represent balances which need to be invested until the cash is required for use in the course of business.
- **Investments for service purposes** – are taken or held primarily for the provision and for the purpose of delivering public services (including housing, regeneration and local infrastructure) or in support of joint working with others to deliver such services.
- **Investments for commercial purposes** – are long term investments taken or held primarily for financial return and are not linked to treasury management activity or directly part of delivering services. The Council does not hold any investments primarily for financial return.

This report deals solely with treasury (financial) investments, (as managed by the treasury management team). Investments for both services purposes and commercial purposes are covered in greater detail in the Investment Strategy

Report and Capital Strategy Report which will be presented to Cabinet on 15 February 2024 and then Full Council on 29 February 2024.

The Authority's investment policy has regard to the following: -

- DLUHC's Guidance on Local Government Investments ("the Guidance")
- CIPFA Treasury Management in Public Services Code of Practice and Cross Sectoral Guidance Notes 2021 ("the Code")
- CIPFA Treasury Management Guidance Notes 2021

The Authority's investment priorities will be security first, portfolio liquidity second and then yield (return). The Authority will aim to achieve the optimum return (yield) on its investments commensurate with proper levels of security and liquidity and with regard to the Authority's risk appetite.

In the current economic climate, it is considered appropriate to maintain a degree of liquidity to cover cash flow needs but to also consider "laddering" investments for periods up to 12 months with high credit rated financial institutions, whilst investment rates remain elevated, as well as wider range fund options.

The above guidance from the DLUHC and CIPFA places a high priority on the management of risk. This Authority has adopted a prudent approach to managing risk and defines its risk appetite by the following means: -

1. Minimum acceptable **credit criteria** are applied in order to generate a list of highly creditworthy counterparties. This also enables diversification and thus avoidance of concentration risk. The key ratings used to monitor counterparties are the short-term and long-term ratings.
2. **Other information:** ratings will not be the sole determinant of the quality of an institution; it is important to continually assess and monitor the financial sector on both a micro and macro basis and in relation to the economic and political environments in which institutions operate. The assessment will also take account of information that reflects the opinion of the markets. To achieve this consideration the Authority will engage with its advisors to maintain a monitor on market pricing such as "**credit default swaps**" and overlay that information on top of the credit ratings.
3. **Other information sources** used will include the financial press, share price and other such information pertaining to the financial sector in order to establish the most robust scrutiny process on the suitability of potential investment counterparties.
4. This Authority has defined the list of **types of investment instruments** that the treasury management team are authorised to use. There are two lists in Appendix Biv under the categories of 'specified' and 'non-specified' investments.

Specified Treasury investments are those with a high level of credit quality and subject to a maturity limit of one year or have less than a year left to run to maturity, if originally they were classified as being non-specified investments solely due to the maturity period exceeding one year.

Non-specified Treasury investments are those with less high credit quality, may be for periods in excess of one year, and/or are more complex instruments which require greater consideration by members and officers before being authorised for use.

5. **Non-specified and loan investment limits.** The Authority has determined that it will set a limit to the maximum exposure of the total treasury management investment portfolio to non-specified treasury management investments of £5m.
6. **Lending limits**, (amounts and maturity), for each counterparty will be set through applying the matrix table in paragraph 4.2.
7. **Transaction limits** are set for each type of investment in 4.2.
8. Investments will only be placed with counterparties from countries with a specified minimum **sovereign rating**, (see paragraph 4.2).
9. This Authority will set a limit for its investments which are invested for **longer than 365 days**, (see Appendix Bii).
10. This Authority has engaged **external consultants**, (see paragraph 3.3), to provide expert advice on how to optimise an appropriate balance of security, liquidity and yield, given the risk appetite of this Authority in the context of the expected level of cash balances and need for liquidity throughout the year.
11. All investments will be denominated in **sterling**.
12. As a result of the change in accounting standards for 2023/24 under IFRS 9, this Authority will consider the implications of investment instruments which could result in an adverse movement in the value of the amount invested and resultant charges at the end of the year to the General Fund. (In November 2018, the MHCLG, concluded a consultation for a temporary override to allow English local authorities time to adjust their portfolio of all pooled investments by announcing a statutory override to delay implementation of IFRS 9 for five years ending 31.3.23. More recently, a further extension to the over-ride to 31.3.25 has been agreed by Government.

However, this Authority will also pursue **value for money** in treasury management and will monitor the yield from investment income against appropriate benchmarks for investment performance. Regular monitoring of investment performance will be carried out during the year.

4.2 Creditworthiness Policy

This Authority applies the creditworthiness service provided by the Link Group. This service employs a sophisticated modelling approach utilising credit ratings from the three main credit rating agencies - Fitch, Moody's and Standard & Poor's. The credit ratings of counterparties are supplemented with the following overlays: -

- “watches” and “outlooks” from credit rating agencies;
- CDS spreads that may give early warning of changes in credit ratings;
- sovereign ratings to select counterparties from only the most creditworthy countries.

This modelling approach combines credit ratings, and any assigned Watches and Outlooks, in a weighted scoring system which is then combined with an overlay of CDS spreads. The end-product of this is a series of colour coded bands which indicate the relative creditworthiness of counterparties. These colour codes are used by the Authority to determine the suggested duration for investments. The Authority will, therefore, use counterparties within the following durational bands:

- Yellow 5 years
- Dark pink 5 years for Ultra-Short Dated Bonds with a credit score of 1.25
- Light pink 5 years for Ultra-Short Dated Bonds with a credit score of 1.5
- Purple 2 years
- Blue 1 year (applies to nationalised / semi nationalised UK Banks)
- Orange 1 year
- Red 6 months
- Green 100 days
- No colour not to be used

The Link creditworthiness service uses a wider array of information other than just primary ratings. Furthermore, by using a risk weighted scoring system, it does not give undue preponderance to just one agency's ratings.

Typically, the minimum credit ratings criteria the Authority uses will be a short-term rating (Fitch or equivalents) of F1 and a long-term rating of A-. There may be occasions when the counterparty ratings from one rating agency are marginally lower than these ratings but may still be used. In these instances, consideration will be given to the whole range of ratings available, or other topical market information, to support their use.

All credit ratings will be monitored daily. The Authority is alerted to changes to ratings of all three agencies through its use of the Link creditworthiness service.

- if a downgrade results in the counterparty / investment scheme no longer meeting the Authority's minimum criteria, its further use as a new investment will be withdrawn immediately.
- in addition to the use of credit ratings the Authority will be advised of information in movements in Credit Default Swap spreads against the iTraxx European Senior Financials benchmark and other market data on a daily basis via its Passport website, provided exclusively to it by Link. Extreme market movements may result in downgrade of an institution or removal from the Authority's lending list.

Sole reliance will not be placed on the use of this external service. In addition, this Authority will also use market data and market information, as well as information on any external support for banks to help support its decision-making process.

Y	Pi1	Pi2	P	B	O	R	G	N/C
1	1.25	1.5	2	3	4	5	6	7
Up to 5yrs	Up to 5yrs	Up to 5yrs	Up to 2yrs	Up to 1yr	Up to 1yr	Up to 6mths	Up to 100days	No Colour

	Colour (and long-term rating where applicable)	Money Limit (with any one counterparty)	Time limit
Banks	Yellow	£15.0m	5yrs
Banks	Purple	£15.0m	2 yrs
Banks	Orange	£15.0m	1 yr
Banks – part nationalised	Blue	£15.0m	1 yr
Banks	Red	£15.0m	6 mths
Banks	Green	£15.0m	100 days
Banks	No Colour	Not to be used	
Limit 3 category – Authority's banker (where "No Colour")	XXX	£15.0m	1 day
Other institutions limit	-	£7.5m	5yrs
DMADF	UK sovereign rating	unlimited	6 months
Local authorities	n/a	£15.0m	XXyrs
Housing associations	Colour bands	£15.0m	As per colour band
	Fund rating**	Money Limit (with any one counterparty)	Time Limit
Money Market Funds CNAV	AAA	£10.0m	liquid
Money Market Funds LVNAV	AAA	£10.0m	liquid
Money Market Funds VNAV	AAA	£10.0m	liquid

Ultra-Short Dated Bond Funds with a credit score of 1.25	Dark Pink / AAA	£10.0m	liquid
Ultra-Short Dated Bond Funds with a credit score of 1.50	Light Pink / AAA	£10.0m	liquid

Creditworthiness: Significant levels of downgrades to Short and Long-Term credit ratings have not materialised since the crisis in March 2020. In the main, where they did change, any alterations were limited to Outlooks. Nonetheless, when setting minimum sovereign debt ratings, this Authority will not set a minimum rating for the UK.

CDS prices: Although bank CDS prices, (these are market indicators of credit risk), spiked upwards during the days of the Truss/Kwarteng government in the autumn of 2022, they have returned to more average levels since then. However, sentiment can easily shift, so it will remain important to undertake continual monitoring of all aspects of risk and return in the current circumstances. Link monitor CDS prices as part of their creditworthiness service to local authorities and the Authority has access to this information via its Link-provided Passport portal.

Limits: Due care will be taken to consider the exposure of the Authority's total investment portfolio to non-specified investments, countries, groups and sectors.

- a) **Non-specified treasury management investment limit:** The Authority has determined that it will limit the maximum total exposure of treasury management investments to non-specified treasury management investments as being £5m.
- b) **Country limit:** The Authority has determined that it will only use approved counterparties from the UK and from countries with a minimum sovereign credit rating of AA- from Fitch. The list of countries that qualify using this credit criteria as at the date of this report are shown in Appendix Bv. This list will be added to, or deducted from, by officers should ratings change in accordance with this policy.

Other limits. In addition: -

- no more than £15m, with the exception of Money Market Funds where the Authority has no control of the sovereignty splits, will be placed with any non-UK country at any time;
- limits in place above will apply to a group of companies/institutions;
- sector limits will be monitored regularly for appropriateness.

4.3 Treasury Investment Strategy

The Council generally expects to maintain an investment balance of between £10.0m and £25.0m, at each month end, for the forthcoming year. There may be circumstances where the Council takes advantage favourable borrowing rates and investments may exceed £25m on a short-term basis from time to time due to differing maturity dates or certain periods of the year when markets are less liquid and it is appropriate to hold more cash investments; further, the

receipt of grant funding, may result in investments being higher at points during the year.

Objectives: The CIPFA Code requires the Authority to invest its funds prudently, and to have regard to the security and liquidity of its investments before seeking the highest rate of return, or yield. The Authority's objective when investing money is to strike an appropriate balance between risk and return, minimising the risk of incurring losses from defaults and the risk of receiving unsuitably low investment income. Where balances are expected to be invested for more than one year, the Authority will aim to achieve a total return that is equal or higher than the prevailing rate of inflation, in order to maintain the spending power of the sum invested.

Strategy: For its cash flow generated balances, the Authority will seek to utilise its business reserve instant access and notice accounts, Money Market Funds and short-dated deposits (overnight to 100 days) in order to benefit from the compounding of interest. This diversification of investments will represent a continuation of the strategy adopted in 2023/24.

Business models: Under the new IFRS 9 standard, the accounting for certain investments depends on the Authority's "business model" for managing them. The Authority aims to achieve value from its internally managed treasury investments by a business model of collecting the contractual cash flows and therefore, where other criteria are also met, these investments will continue to be accounted for at amortised cost.

Approved counterparties: The Authority may invest its surplus funds with any of the counterparty types listed below, subject to the cash limits (per counterparty) and the time limits shown in the creditworthiness policy (4.2).

- **The UK Government, local authorities and other government entities:** Loans to, bonds and bills issued or guaranteed by national governments, regional and local authorities and multilateral development banks. These investments are not subject to bail-in, and there is a lower risk of insolvency, although they are not without risk. Investments with the UK Government may be made in unlimited amounts for up to 50 years.
- **Secured investments:** Investments secured on the borrower's assets, which limits the potential losses in the event of insolvency. The amount and quality of the security will be a key factor in the investment decision. Covered bonds and reverse repurchase agreements with banks and building societies are exempt from bail-in. Where there is no investment specific credit rating, but the collateral upon which the investment is secured has a credit rating, the higher of the collateral credit rating and the counterparty credit rating will be used. The combined secured and unsecured investments with any one counterparty will not exceed the cash limit for secured investments.
- **Banks & Building Societies (unsecured):** Accounts, deposits, certificates of deposit and senior unsecured bonds with banks and

building societies, other than multilateral development banks. These investments are subject to the risk of credit loss via a bail-in should the regulator determine that the bank is failing or likely to fail. See below for arrangements relating to operational bank accounts.

- **Registered providers (unsecured):** Loans to, and bonds issued or guaranteed by, registered providers of social housing or registered social landlords, formerly known as housing associations. These bodies are regulated by the Regulator of Social Housing (in England), the Scottish Housing Regulator, the Welsh Government and the Department for Communities (in Northern Ireland). As providers of public services, they retain the likelihood of receiving government support if needed.
- **Money market funds:** Pooled funds that offer same-day or short notice liquidity and very low or no price volatility by investing in short-term money markets. They have the advantage over bank accounts of providing wide diversification of investment risks, coupled with the services of a professional fund manager in return for a small fee. Although no sector limit applies to money market funds, the Authority will take care to diversify its liquid investments over a variety of providers to ensure access to cash at all times.
- **Strategic pooled funds:** Bond, equity and property funds that offer enhanced returns over the longer term but are more volatile in the short term. These allow the Authority to diversify into asset classes other than cash without the need to own and manage the underlying investments. Because these funds have no defined maturity date, but are available for withdrawal after a notice period, their performance and continued suitability in meeting the Authority's investment objectives will be monitored regularly.
- **Real estate investment trusts:** Shares in companies that invest mainly in real estate and pay the majority of their rental income to investors in a similar manner to pooled property funds. As with property funds, REITs offer enhanced returns over the longer term, but are more volatile especially as the share price reflects changing demand for the shares as well as changes in the value of the underlying properties.
- **Other investments:** This category covers treasury investments not listed above, for example unsecured corporate bonds and company loans. Non-bank companies cannot be bailed-in but can become insolvent placing the Authority's investment at risk
- **Operational bank accounts:** The Authority may incur operational exposures, for example through current accounts, collection accounts and merchant acquiring services, to any UK bank with credit ratings no lower than BBB- and with assets greater than £25 billion. These are not classed as investments but are still subject to the risk of a bank bail-in, and balances will therefore be kept below £15.0m per bank. The Bank of England has stated that in the event of failure, banks with assets greater than £25 billion are more likely to be bailed-in than made insolvent, increasing the chance of the Authority maintaining operational continuity.

Approved Instruments: The Authority may lend or invest money using any of the following instruments:

- interest-bearing bank accounts
- fixed term deposits and loans
- callable deposits and loans where the borrower may repay before maturity, but subject to a maximum of £5million in total
- certificates of deposit
- bonds, notes, bills, commercial paper and other marketable instruments, and shares in money market funds and other pooled funds,

Investments may be made at either a fixed rate of interest, or at a variable rate linked to a market interest rate, such as SONIA, subject to the limits on interest rate exposures below.

Liquidity management: The Authority uses cash flow forecasting to determine the maximum period for which funds may prudently be committed. The forecast is compiled on a prudent basis, to minimise the risk of the Authority being forced to borrow on unfavourable terms to meet its financial commitments. Limits on long-term investments are set by reference to the Authority's medium term financial plan and cash flow forecast.

4.4 Ethical Investments

The Council will not knowingly directly invest in organisations whose activities include practices which directly pose a risk of serious harm to individuals or groups, or whose activities are inconsistent with the mission and values of the Council. At the same time the Council will take full responsibility for proper management of risk and safeguarding its investments by ensuring that they are diversified and made with organisations suitably credit assessed.

The Council's lending activity will be subject to (in order of rank)

- the assessment of meeting the minimum lending criteria as specified in the current Treasury Management Strategy and the minimum credit ratings as outlined in the Strategy.
- meeting the Security, Liquidity & Yield (SLY) criteria as set out in the current Treasury Management Strategy, and
- investments are not contrary to the values outlined in the Ethical Investment Framework (Appendix Bvii)

4.5 Related Matters

Financial derivatives: Local authorities have previously made use of financial derivatives embedded into loans and investments both to reduce interest rate risk (e.g. interest rate collars and forward deals) and to reduce costs or increase income at the expense of greater risk (e.g. LOBO loans and callable deposits). The general power of competence in Section 1 of the Localism Act 2011

removes much of the uncertainty over local authorities' use of standalone financial derivatives (i.e. those that are not embedded into a loan or investment).

The Authority will only use standalone financial derivatives (such as swaps, forwards, futures and options) where they can be clearly demonstrated to reduce the overall level of the financial risks that the Authority is exposed to. Additional risks presented, such as credit exposure to derivative counterparties, will be taken into account when determining the overall level of risk. Embedded derivatives will not be subject to this policy, although the risks they present will be managed in line with the overall treasury risk management strategy.

Financial derivative transactions may be arranged with any organisation that meets the approved investment criteria. The current value of any amount due from a derivative counterparty will count against the counterparty credit limit and the relevant foreign country limit.

In line with CIPFA Code, the Authority will seek external advice and will consider that the advice before entering into financial derivatives to ensure that it fully understands the implications.

Markets in Financial Instruments Directive (MIFID): The Authority has opted up to professional client status with its providers of financial services, including advisers, banks, brokers and fund managers, allowing it access to a greater range of services but with the greater regulatory protections afforded to individuals and small companies. Given the size and range of the Authority's treasury management activities, the Chief Financial Officer believes this to be the most appropriate status.

5.0 MINIMUM REVENUE PROVISION STATEMENT 2024/25

5.1 The Local Authorities (Capital Finance and Accounting) (England) (Amendment) Regulations 08 (SI 08/414) place a duty on local authorities to make a prudent provision for debt redemption. Guidance on Minimum Revenue Provision has been issued by the Secretary of State and local authorities are required to "have regard" to such Guidance under section 21(1A) of the Local Government Act 2003.

The four MRP options available are:

- Option 1: Regulatory Method
- Option 2: CFR Method
- Option 3: Asset Life Method
- Option 4: Depreciation Method

(NB - this does not preclude other prudent methods.)

MRP in 2023/24: Options 1 and 2 may be used only for supported expenditure. Methods of making prudent provision for self-financed expenditure include

Options 3 and 4 (which may also be used for supported expenditure if the Council chooses).

The MRP Statement will be submitted to Council before the start of the 2024/25 financial year. If it is ever proposed to vary the terms of the original MRP Statement during the year, a revised statement should be put to Council at that time.

The Council will calculate MRP by the following methods –

Historic MRP (re pre 2007/08 borrowing). This will be calculated by dividing the balance at 31/3/07 (calculated in accordance with regulations) by 50 for an annual charge that charges over a finite period rather than a 4% reducing balance. Broadly in line with option 3.

MRP in respect of prudential borrowing, government supported allocations since 2007/08 and PFI will be charged over the life of the asset on an annuity basis (option 3 in the regulations).

DLUHC is in the final stages of a consultation where it is seeking views on revised MRP Guidance and the final proposed amendments to the Regulations. The consultation opened 21 December 2023 and remains open until 16 February 2024 with final changes taking effect from 2024/25 Financial Year. This consultation builds on a previous consultation which ran in June - July 2022 and focused on the exclusion of a proportion of debt from the MRP calculation, particularly relating to investment assets, capital loans and some operational assets.

MRP in respect of leases brought on Balance Sheet under the International Financial Reporting Standards (IFRS) based Accounting Code of Practice will match the annual principal repayment for the associated deferred liability which is broadly in line with the life of the asset.

Capital expenditure incurred during 2024/25 will not be subject to a MRP charge until 2025/26.

6.0 TREASURY MANAGEMENT POLICY STATEMENT 2024/25

6.1 The Council adopts the key recommendations of CIPFA's Treasury Management in the Public Services: Code of Practice (the Treasury Management Code (TM Code)), as described in Section 5 of the TM Code.

Accordingly, the Council will create and maintain, as the cornerstones for effective treasury management:-

- A treasury management policy statement, stating the policies, objectives and approach to risk management of its treasury management activities
- Suitable Treasury Management Practices (TMPs), setting out the manner in which the Council will seek to achieve those policies and

objectives, and prescribing how it will manage and control those activities.

- Investment Management Practices (IMPs) for investments that are not for treasury management purposes.

The Council will receive reports on its treasury management policies, practices and activities including, as a minimum, an annual strategy in advance of the year, a mid-year review and an annual report after its close, in the form prescribed in its TMPs.

The Council delegates responsibility for the implementation and monitoring of its treasury management policies and practices to Audit Committee and for the execution and administration of treasury management decisions to Director: Finance & Human Resources, who will act in accordance with the organisation's policy statement and TMPs and CIPFA's Standard of Professional Practice on Treasury Management.

The Council nominates Audit Committee to be responsible for ensuring effective scrutiny of the treasury management strategy and policies.

6.2 Policies and objectives of Treasury Management Activities

The Council defines its treasury management activities as:

"The management of the Council's investments and cash flows, its banking, money market and capital market transactions; the effective control of the risks associated with those activities; and the pursuit of optimum performance consistent with those risks."

This Council regards the successful identification, monitoring and control of risk to be the prime criteria by which the effectiveness of its treasury management activities will be measured. Accordingly, the analysis and reporting of treasury management activities will focus on their risk implications for the organisation, and any financial instruments entered into to manage these risks.

This Council acknowledges that effective treasury management will provide support towards the achievement of its business and service objectives. It is therefore committed to the principles of achieving value for money in treasury management, and to employing suitable performance measurement techniques, within the context of effective risk management."

The Council's borrowing will be affordable, sustainable and prudent and consideration will be given to the management of interest rate risk and refinancing risk. The source from which the borrowing is taken and the type of borrowing should allow the Council transparency and control over its debt. The Council will look to minimise borrowing through the use of maturing investments to fund capital expenditure rather than reinvestment.

The Council's primary objective in relation to investments remains the security of capital. The liquidity or accessibility of the Authority's investments followed by the yield earned on investments remain important but are secondary considerations. Generally as investments mature they will not be reinvested but be used to minimise borrowing.

7.0 OTHER ITEMS

7.1 Financial Implications

The budget for investment income in 2024/25 is £0.675m, based on an average investment portfolio of £15.0m at an interest rate of 4.5%. The budget for debt interest paid in 2024/25 is £15.912m, based on an average debt portfolio of £445.402m at an average interest rate of 3.57%. If actual levels of investments and borrowing, or actual interest rates, differ from those forecast, performance against budget will be correspondingly different. Such differences will be reported through regular financial monitoring to Cabinet.

7.2 Balanced Budget Requirement:

The Authority complies with the provisions of S32 of the Local Government Finance Act 1992 to set a balanced budget.

7.3 Monitoring and Reporting on the Treasury Outturn and Prudential Indicators

The Interim Director: Finance & Human Resources will report to the Audit Committee on treasury management activity / performance and Performance Indicators as follows -

- Half yearly against the strategy approved for the year. The authority will produce an outturn report on its treasury activity no later than 31st July after the financial year end and an update report alongside the Treasury Strategy in the last quarter of the financial year.

Audit Committee will be responsible of the scrutiny of treasury management activity and practices.

A detailed list of the Treasury Management Section of Delegation and the Treasury Management Role of the Section 151 Officer are included at Appendix Biv.

7.4 Training

The CIPFA Treasury Management Code requires the responsible officer to ensure that members with responsibility for treasury management receive adequate training in treasury management. This especially applies to members responsible for scrutiny.

The scale and nature of knowledge and training requirements will depend on the size and complexity of the organisation's treasury management needs.

Based on our treasury management portfolio the approach we will adopt is:

- Record attendance at training and circulate training materials to those unable to attend; also ensure action is taken where poor attendance is identified.
- Discuss and agree learning plans as part of APPD / 1-to-1 for treasury management officers; consider training plan requirements for members.
- Consider self-assessment requirements for both treasury management officers and relevant members.
- Periodically ask treasury management officers and relevant members to highlight any training needs.

Training has been undertaken by members in July 2023 and January 2024 and further training will be arranged as required.

A formal record of the training received by officers central to the Treasury function will be recorded as part of the APPD process. Similarly, a formal record of the treasury management/capital finance training received by members will also be maintained by the Treasury Function.

7.5 Treasury Management Consultants

The Authority uses Link Group, Link Treasury Services Limited as its external treasury management advisors.

The Authority recognises that responsibility for treasury management decisions remains with the organisation at all times and will ensure that undue reliance is not placed upon the services of our external service providers. All decisions will be undertaken with regards to all available information, including, but not solely, our treasury advisers.

It also recognises that there is value in employing external providers of treasury management services to acquire access to specialist skills and resources. The Authority will ensure that the terms of their appointment and the methods by which their value will be assessed are properly agreed and documented and subjected to regular review.

Existing Treasury Portfolio Projected Forward

Treasury Portfolio (£m)	Current Portfolio	%	31.3.24 Estimate	31.3.25 Estimate	31.3.26 Estimate	31.3.27 Estimate
Treasury Investments:						
Banks	6.6	22.3	2.5	2.5	2.5	2.5
Money Markets	5.0	16.8	5.0	5.0	5.0	5.0
DMADF	18.0	60.9	7.5	7.5	7.5	7.5
Total Treasury Investments	29.6	100.0	15.0	15.0	15.0	15.0
Treasury external borrowing						
Local Authorities & other temporary loans	104.0	26.3	126.2	100.0	100.0	100.0
PWLB	206.4	52.2	209.4	353.5	429.3	457.8
Market Loans	15.0	3.8	15.0	15.0	15.0	15.0
LOBO	25.0	6.3	25.0	25.0	25.0	25.0
Municipal Loans	0.3	0.1	0.2	0.2	0.1	0.0
Total Treasury external borrowing	350.7	88.7	375.8	493.7	569.4	597.8
Net Treasury investments / (borrowing)	(321.1)		(360.8)	(478.7)	(554.4)	(582.8)
Long Term Liabilities						
PFI	(44.5)	11.3	(44.5)	(41.1)	(38.4)	(38.1)
Finance Leases	(0.1)	0.0	(0.1)	0.0	0.0	0.0
Total Long Term Liabilities	44.6	11.3	(44.6)	(41.1)	(38.4)	(38.1)
Net investments / (borrowing)	(365.7)		(405.4)	(519.8)	(592.8)	(620.9)

Capital and Treasury Management Prudential Indicators 2024/25

1.0 Background:

There is a requirement under the Local Government Act 2003 for local authorities to have regard to CIPFA's Prudential Code for Capital Finance in Local Authorities (the "CIPFA Prudential Code") when setting and reviewing their Prudential Indicators.

The Authority measures and manages its exposure to treasury management risks using the following indicators.

Committee is asked to approve the following Capital and Treasury Management Prudential Indicators for 2024/25.

2.0 Capital Expenditure and Financing:

This prudential indicator is a summary of the Authority's capital expenditure plans, both those agreed previously, and those forming part of this budget cycle. Members are asked to approve the capital expenditure forecasts: -

Capital expenditure (£m)	2022/23 Actual	2023/24 Estimate	2024/25 Estimate	2025/26 Estimate	2026/27 Estimate
Total	75.704	90.047	179.798	98.086	34.640

Other long-term liabilities - the above financing need excludes other long-term liabilities, such as PFI and leasing arrangements that already include borrowing instruments.

The table below summarises the above capital expenditure plans and how these plans are being financed by capital or revenue resources. Any shortfall of resources results in a funding borrowing need.

Financing of capital expenditure (£m)	2022/23 Actual	2023/24 Estimate	2024/25 Estimate	2025/26 Estimate	2026/27 Estimate
Capital receipts	13.598	0.774	7.556	0.000	0.000
Capital grants	28.775	43.432	44.061	19.292	0.207
Revenue	1.158	1.678	1.058	0.067	0.000
External	6.920	2.067	9.250	3.008	0.000
Net financing need for the year	25.253	42.096	117.873	75.719	28.433

3.0 The Authority's Borrowing Need (the Capital Financing Requirement)

The second prudential indicator is the Authority's Capital Financing Requirement (CFR). See Table 2 – Capital Financing Requirement (CFR) in Section 1.7 above.

The Authority is asked to approve the CFR projections below:

Capital Financing Requirement (£m)	2022/23 Actual	2023/24 Estimate	2024/25 Estimate	2025/26 Estimate	2026/27 Estimate
Total CFR	520.687	558.833	671.600	742.854	769.146
Movement in CFR		38.146	112.767	71.254	26.292

CIPFA's Prudential Code for Capital Finance in Local Authorities recommends that the Authority's total debt should be lower than its highest forecast CFR over the next three years. The CFR Table above shows that the Authority expects to fully comply with this recommendation.

4.0 Limits to Borrowing Activity:

The Operational Boundary. This is the limit beyond which external debt is not normally expected to exceed. In most cases, this would be a similar figure to the CFR, but may be lower or higher depending on the levels of actual debt and the ability to fund under-borrowing by other cash resources.

Operational Boundary (£m)	2023/24 Estimate	2024/25 Estimate	2025/26 Estimate	2026/27 Estimate
Debt	475.0	635.0	725.0	745.0
Other long-term liabilities	50.0	50.0	50.0	50.0
Total	525.0	685.0	775.0	795.0

The Authorised Limit for external debt. This is a key prudential indicator and represents a control on the maximum level of borrowing. This represents a legal limit beyond which external debt is prohibited, and this limit needs to be set or revised by the Full Council. It reflects the level of external debt which, while not desired, could be afforded in the short-term, but is not sustainable in the longer-term.

- This is the statutory limit determined under section 3 (1) of the Local Government Act 2003. The Government retains an option to control either the total of all local authority plans, or those of a specific authority, although this power has not yet been exercised.
- The Authority is asked to approve the following Authorised Limit:

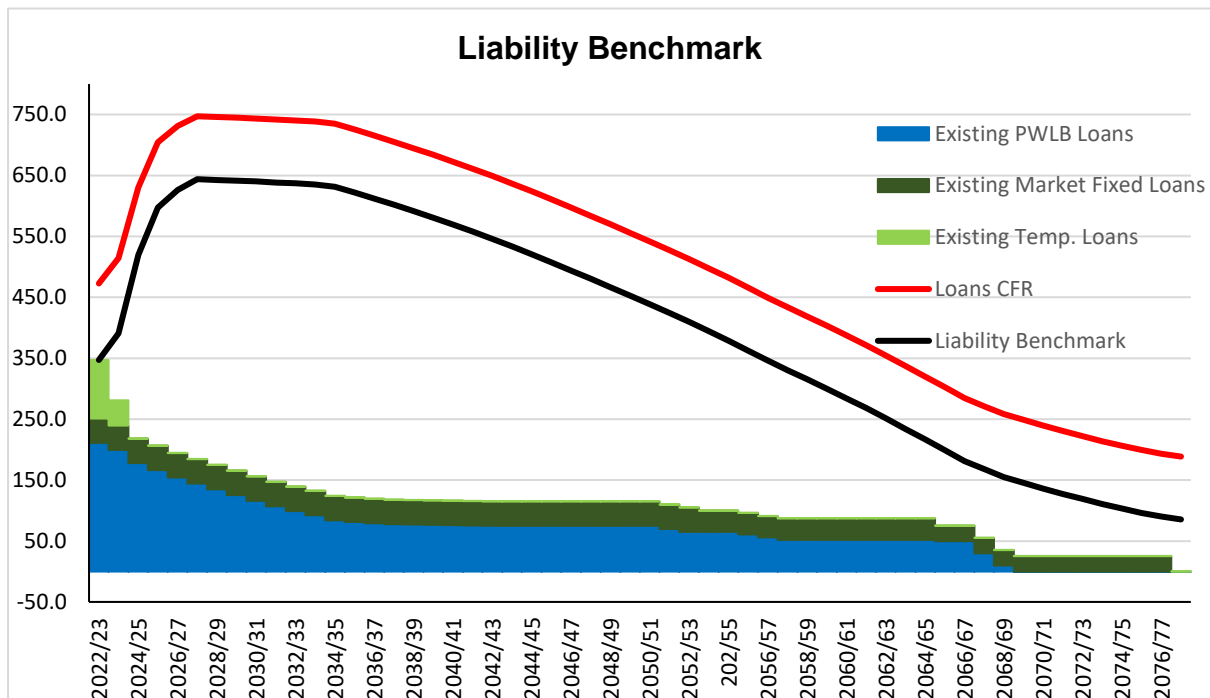
Authorised Limit (£m)	2023/24 Estimate	2024/25 Estimate	2025/26 Estimate	2026/27 Estimate
Debt	495.0	655.0	745.0	765.0
Other long-term liabilities	54.0	54.0	54.0	54.0
Total	549.0	709.0	799.0	819.0

5.0 Liability benchmark:

To compare the Council's actual borrowing against an alternative strategy, a liability benchmark has been calculated showing the lowest risk level of borrowing. This assumes the same forecasts as the Capital Financing Requirement (CFR), but that cash and investment balances are kept to a minimum level of £15m at each year-end to maintain sufficient liquidity but minimise credit risk.

Liability Benchmark (£m)	31.3.23 Actual	31.3.24 Estimate	31.3.25 Forecast	31.3.26 Forecast	31.3.27 Forecast
Loans CFR	472.799	514.258	630.400	704.426	731.008
Less: Balance Sheet Resources	(164.077)	(138.516)	(125.873)	(122.348)	(119.915)
Net Loans Requirement	308.722	375.742	504.527	582.078	611.093
Plus: Liquidity Allowance	38.499	15.000	15.000	15.000	15.000
Liability Benchmark	347.221	390.742	519.527	597.078	626.093

Following on from the medium-term forecasts in the table above, the long-term liability benchmark has been calculated (see chart below) and assumes capital expenditure funded by borrowing in line with the capital programme, minimum revenue provision on new capital expenditure based on appropriate asset lives and balance sheet resources reducing in line with anticipated use of reserves.



The liability benchmark is a projection of the amount of loan debt outstanding which the authority needs each year into the future, in order to fund its existing debt liabilities, planned prudential borrowing and other cash flows.

The headroom for the future borrowing requirement is shown by the gap between the authority's existing loans which are still outstanding at a given future date, and the authority's future need for borrowing (as shown by the liability benchmark).

It therefore shows how closely the existing loans book fits the future needs of the authority based only on its current plans. Any shortfall will need to be met by future borrowing; any excess will have to be invested (unless existing borrowing is prematurely repaid). Refinancing risk, interest rate risk and credit

risk can be minimized or reduced by ensuring that the existing loans portfolio shows a profile close to the liability benchmark.

For Telford & Wrekin Council, the benchmark shows that our current level of external borrowing is below the amount needed to fund commitments and therefore future borrowing will be required.

In particular, the liability benchmark identifies the maturities needed for new borrowing, in order to match future liabilities. It therefore avoids borrowing for too long or too short. Local authorities have sometimes used the CFR as their benchmark of borrowing needs, but this is likely to result in substantial over-borrowing because authorities generally have systemic in-hand cash flows and balances which keep actual debt (net of treasury investments) well below the CFR. Borrowing needs are based on cash flows, not the CFR – accepting the need for a reasonable but not excessive holding of short term investments for liquidity management.

The liability benchmark makes no assumption about the level of future prudential borrowing in as yet unknown capital budgets. This avoids making large assumptions which may prove to be spectacularly wrong; but the main reason is that it enables the benchmark to be compared like-for-like with the existing loans portfolio to identify the future borrowing and investment needs arising from the authority's existing plans. It shows us what the current debt maturity profile should be to match the authority's current borrowing commitments less MRP and other forecast cash flows. Matching the portfolio to the need minimises treasury risks.

6.0 Security:

The Council considers security, liquidity and yield, in that order, when making investment decisions.

Credit ratings remain an important element of assessing credit risk, but they are not a sole feature in the Council's assessment of counterparty credit risk.

The Council has adopted a voluntary measure of its exposure to credit risk by monitoring the value-weighted credit score of its investment portfolio. This is calculated by applying a score to each investment (AAA=1, AA+=2, etc.) and taking the arithmetic average, weighted by the size of each investment. Unrated investments would be assigned a score based on their perceived risk.

Credit Risk Indicator	Target
Portfolio average credit score	6 or lower, (which is equivalent to a credit rating of 'A' or higher)

7.0 Maturity Structure of Fixed Rate borrowing:

This indicator highlights the existence of any large concentrations of fixed rate debt needing to be replaced at times of uncertainty over interest rates and is designed to protect against excessive exposures to interest rate changes in any one period, in particular in the course of the next ten years.

It is calculated as the amount of projected borrowing that is fixed rate maturing in each period as a percentage of total projected borrowing that is fixed rate. The maturity of borrowing is determined by reference to the earliest date on which the lender can require payment. For loans with Lender Options / Borrower Options (LOBOs) this is assumed as the final maturity date.

Maturity structure of fixed rate borrowing	Existing level 31.12.23 %	Lower Limit for 2024/25 %	Upper Limit for 2024/25 %
under 12 months	15	0	70
12 months and within 24 months	22	0	30
24 months and within 5 years	10	0	50
5 years and within 10 years	13	0	75
10 years and within 20 years	7	0	75
20 years and within 30 years	3	0	75
30 years and within 40 years	5	0	100
40 years and within 50 years	18	0	100
50 years and above	7	0	100

8.0 Principal sums invested for periods longer than a year:

The purpose of this indicator is to control the Authority's exposure to the risk of incurring losses by seeking early repayment of its investments. The limits on the long-term principal sum invested to final maturities beyond the period end will be:

Limit on principal sums invested for periods longer than a year	2023/24 Estimate %	2024/25 Estimate %	2025/26 Estimate %
Limit on total investments	95	95	95

Interest Rate Forecasts and Economic Background

Interest rate forecasts 2023 - 2026

Link Group Interest Rate View 08.01.24													
	Mar-24	Jun-24	Sep-24	Dec-24	Mar-25	Jun-25	Sep-25	Dec-25	Mar-26	Jun-26	Sep-26	Dec-26	Mar-27
BANK RATE	5.25	5.25	4.75	4.25	3.75	3.25	3.00	3.00	3.00	3.00	3.00	3.00	3.00
3 month ave earnings	5.30	5.30	4.80	4.30	3.80	3.30	3.00	3.00	3.00	3.00	3.00	3.00	3.00
6 month ave earnings	5.20	5.10	4.60	4.10	3.70	3.30	3.10	3.10	3.10	3.10	3.10	3.10	3.10
12 month ave earnings	5.00	4.90	4.40	3.90	3.60	3.20	3.10	3.10	3.10	3.10	3.10	3.20	3.20
5 yr PWLB	4.50	4.40	4.30	4.20	4.10	4.00	3.80	3.70	3.60	3.60	3.50	3.50	3.50
10 yr PWLB	4.70	4.50	4.40	4.30	4.20	4.10	4.00	3.90	3.80	3.70	3.70	3.70	3.70
25 yr PWLB	5.20	5.10	4.90	4.80	4.60	4.40	4.30	4.20	4.20	4.10	4.10	4.10	4.10
50 yr PWLB	5.00	4.90	4.70	4.60	4.40	4.20	4.10	4.00	4.00	3.90	3.90	3.90	3.90

PWLB forecasts are based on PWLB certainty rates.

Economic Background

- The third quarter of 2023/24 saw:
 - A 0.3% m/m decline in real GDP in October, potentially partly due to unseasonably wet weather, but also due to the ongoing drag from higher interest rates. Growth for the second quarter, ending 30th September, was revised downwards to -0.1% and growth on an annual basis was also revised downwards, to 0.3%;
 - A sharp fall in wage growth, with the headline 3myy rate declining from 8.0% in September to 7.2% in October, although the ONS “experimental” rate of unemployment has remained low at 4.2%;
 - CPI inflation continuing on its downward trajectory, from 8.7% in April to 4.6% in October, then again to 3.9% in November;
 - Core CPI inflation decreasing from April and May’s 31 years’ high of 7.1% to 5.1% in November, the lowest rate since January 2022;
 - The Bank of England holding Bank Rate at 5.25% in November and December;
 - A steady fall in 10-year gilt yields as investors revised their interest rate expectations lower.
- The revision of GDP data in Q2 to a 0.1% q/q fall may mean the mildest of mild recessions has begun. Indeed, real GDP in October fell 0.3% m/m which does suggest that the economy may stagnate again in Q3. The weakness in October may partly be due to the unseasonably wet weather. That said, as the weakness was broad based it may also be the case that the ongoing drag from higher interest rates is more than offsetting any boost from the rise in real wages.
- However, the rise in the flash composite activity Purchasing Managers Index, from 50.7 in November to 51.7 in December, did increase the chances of the economy avoiding a contraction in Q3. The improvement was entirely driven by the increase in the services activity balance from 50.9 to 52.7. (Scores above 50 point to expansion in the economy, although only tepid in this instance.) The press release noted that this was primarily driven by a revival in consumer demand in the technological and financial services sectors. This chimes with the further improvement in the GfK measure of consumer confidence in December, from -24 to -22. The services PMI is now consistent with non-retail services output growing

by 0.5% q/q in Q3, but this is in stark contrast to the manufacturing sector where the output balance slumped from 49.2 to 45.9 and, at face value, the output balance is consistent with a 1.5% q/q fall in manufacturing output in Q3.

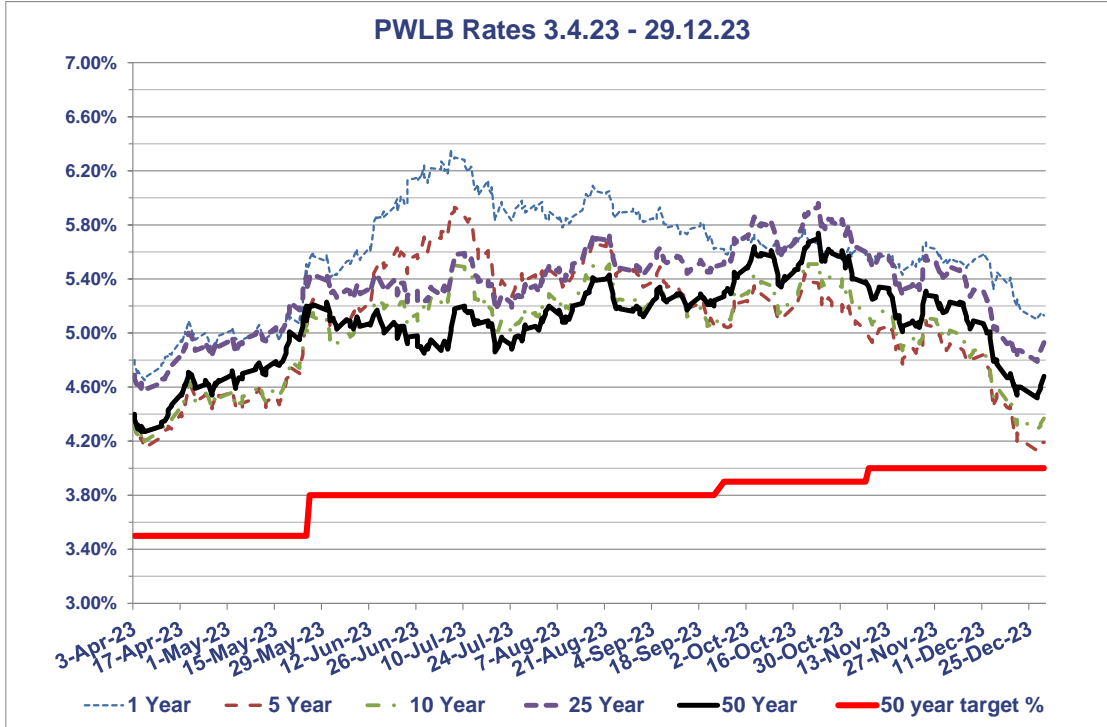
- The 0.3% m/m fall in retail sales volumes in October means that after contracting by 1.0% q/q (which was downwardly revised from -0.8% q/q) in Q2, retail activity remained weak at the start of Q3. That suggests higher interest rates are taking a bigger toll on real consumer spending.
- Higher interest rates have filtered through the financial channels and weakened the housing market but, overall, it remains surprisingly resilient with the Halifax house price index recently pointing to a 1.7% year on year increase whilst Nationwide's December data pointed to a -1.8% year on year decrease. However, the full weakness in real consumer spending and real business investment has yet to come as currently it is estimated that around two thirds to a half of the impact of higher interest rates on household interest payments has yet to be felt.
- Overall, we expect real GDP growth to remain subdued throughout 2024 as the drag from higher interest rates is protracted but a fading of the cost-of-living crisis and interest rate cuts in the second half of 2024 will support a recovery in GDP growth in 2025.
- The labour market remains tight by historical standards, but the sharp fall in wage growth seen in October will reinforce the growing belief in markets that interest rates will be cut mid-2024. Wage growth eased in October much faster than the consensus expected. Total earnings fell by 1.6% m/m, which meant the headline 3myy rate eased from 8.0% in September to 7.2% in October. This news will be welcomed by the Bank of England. Indeed, the timelier three-month annualised rate of average earnings growth fell from +2.4% to -1.2%. Excluding bonuses, it fell from 5.3% to 2.0%. Furthermore, one of the Bank's key barometers of inflation persistence, regular private sector pay growth, dropped from 7.9% 3myy to 7.3%, which leaves it comfortably on track to fall to 7.2% by December, as predicted by the Bank in November.
- The fall in wage growth occurred despite labour demand being stronger in October than expected. The three-month change in employment eased only a touch from +52,000 in September to +50,000 in October. But resilient labour demand was offset by a further 63,000 rise in the supply of workers in the three months to October. That meant labour supply exceeded its pre-pandemic level for the first time, and the unemployment rate remained at 4.2% in October. In the three months to November, the number of job vacancies fell for the 17th month in a row, from around 959,000 in October to around 949,000. That has reduced the vacancy to unemployment ratio as demand for labour eases relative to supply, which may support a further easing in wage growth in the coming months.
- CPI inflation fell from 6.7% in September to 4.6% in October, and then again to 3.9% in November. Both these falls were bigger than expected and there are clear signs of easing in domestic inflationary pressures. The fall in core CPI inflation from 5.7% to 5.1% in November was bigger than expected (consensus forecast 5.6%). That's the lowest rate since January 2022. Some of the decline in core inflation was due to the global influence of core goods inflation, which slowed from 4.3% to 3.3%. But some of it was due to services inflation falling from 6.6% to

6.3%. The Bank views the latter as a key barometer of the persistence of inflation and it came in further below the Bank's forecast of 6.9% in its November Monetary Policy Report. This will give the Bank more confidence that services inflation is now on a firmly downward path.

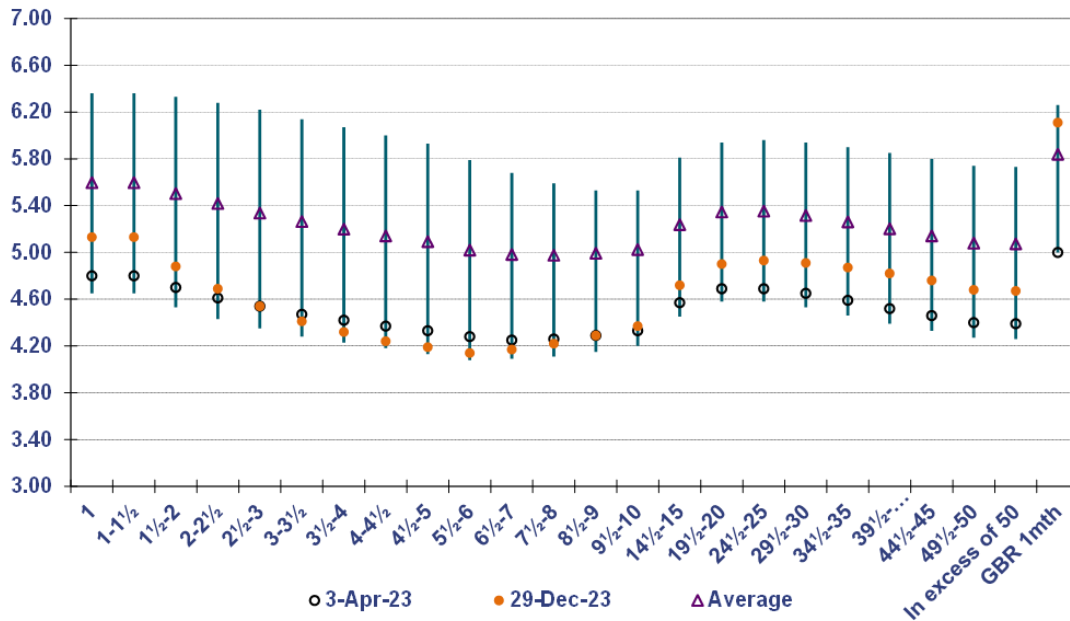
- The Bank of England sprung no surprises with its December monetary policy committee (MPC) meeting, leaving interest rates at 5.25% for the third time in a row and pushing back against the prospect of near-term interest rate cuts. The Bank continued to sound hawkish, with the MPC maintaining its tightening bias saying that “further tightening in monetary policy would be required if there were evidence of more persistent inflationary pressures”. And it stuck to the familiar script, saying that policy will be “sufficiently restrictive for sufficiently long” and that “monetary policy is likely to need to be restrictive for an extended period of time”. In other words, the message is that the MPC is not yet willing to endorse investors' expectations that rates will be cut as soon as May 2024.
- Looking ahead, our colleagues at Capital Economics forecast that the recent downward trends in CPI and core inflation will stall over the next few months before starting to decline more decisively again in February. That explains why we think the Bank of England won't feel comfortable cutting interest rates until H2 2024.
- The fall in UK market interest rate expectations in December has driven most of the decline in 10-year gilt yields, which have fallen in line with 10-year US Treasury and euro-zone yields. 10-year gilt yields have fallen from 4.68% in October 2023 to around 3.70% in early January, with further declines likely if the falling inflation story is maintained.
- Investors' growing expectations that the Fed will cut interest rates soon has led to an improvement in risk sentiment, which has boosted the pound and other risky assets. In addition, the rise in the pound, from \$1.21 in November to \$1.27 now, has also been supported by the recent relative decline in UK wholesale gas prices.
- The further fall in 10-year real gilt yields in December has supported the recent rise in the FTSE 100. That said, the index remains 5% below its record high in February 2023. This modest rise in equities appears to have been mostly driven by strong performances in the industrials and rate-sensitive technology sectors. But UK equities have continued to underperform US and euro-zone equities. The FTSE 100 has risen by 2.2% in December, while the S&P 500 has risen by 3.8%. This is partly due to lower energy prices, which have been a relatively bigger drag on the FTSE 100, due to the index's high concentration of energy companies.

In the chart below, the rise in gilt yields across the curve in the first half of 2023/24, and therein PWLB rates, is clear to see, prior to the end of year rally based on a mix of supportive domestic and international factors.

PWLB RATES 3.4.23 - 29.12.23



PWLB Certainty Rate Variations 3.4.23 to 29.12.23



HIGH/LOW/AVERAGE PWLB RATES FOR 3.4.23 – 29.12.23

	1 Year	5 Year	10 Year	25 Year	50 Year
Low	4.65%	4.13%	4.20%	4.58%	4.27%
Date	06/04/2023	27/12/2023	06/04/2023	06/04/2023	05/04/2023
High	6.36%	5.93%	5.53%	5.96%	5.74%
Date	06/07/2023	07/07/2023	23/10/2023	23/10/2023	23/10/2023
Average	5.60%	5.09%	5.03%	5.35%	5.08%
Spread	1.71%	1.80%	1.33%	1.38%	1.47%

MPC meetings 2nd November and 14th December 2023

- On 2nd November, the Bank of England's Monetary Policy Committee (MPC) voted to keep Bank Rate on hold at 5.25%, and on 14th December reiterated that view. Both increases reflected a split vote, the latter by 6 votes to 3, with the minority grouping voting for an increase of 0.25% as concerns about "sticky" inflation remained in place.
- Nonetheless, with UK CPI inflation now at 3.9%, and core inflating beginning to moderate (5.1%), markets are voicing a view that rate cuts should begin in Q1 2024/25, some way ahead of the indications from MPC members. Of course, the data will be the ultimate determinant, so upcoming publications of employment, wages and inflation numbers will be of particular importance, and on-going volatility in Bank Rate expectations and the gilt yield curve can be expected.
- In addition, what happens outside of the UK is also critical to movement in gilt yields. The US FOMC has kept short-term rates in the range of 5.25%-5.50%, whilst the ECB has moved its Deposit rate to a probable peak of 4%. Markets currently expect both central banks to start cutting rates in 2024.

Credit and Counterparty Risk Management

Specified Investments: All such investments will be sterling denominated, with **maturities up to a maximum of 1 year**, meeting the minimum 'high' quality criteria where applicable. (Non-specified investments which would be specified investments apart from originally being for a period longer than 12 months, will be classified as being specified once the remaining period to maturity falls to under twelve months.)

Non-specified Investments: These are any investments which do not meet the specified investment criteria. A maximum of £5m will be held in aggregate in non-specified investment.

A variety of investment instruments will be used, subject to the credit quality of the institution, and depending on the type of investment made, it will fall into one of the above categories.

The criteria, time limits and monetary limits applying to institutions or investment vehicles are:

	Minimum credit criteria / colour band	** Max % of total investments / £ limit per institution	Max. maturity period
DMADF – UK Government	Yellow	100%	6 months (max. is set by the DMO*)
UK Gilts	Yellow		5 years
UK Treasury Bills	Yellow		364 days (max. is set by the DMO*)
Bonds issued by multilateral development banks	Yellow		5 years
Money Market Funds CNAV	AAA	100%	Liquid
Money Market Funds LNAV	AAA		Liquid
Money Market Funds VNAV	AAA		Liquid
Ultra-Short Dated Bond Funds with a credit score of 1.25	AAA	100%	Liquid
Ultra-Short Dated Bond Funds with a credit score of 1.5	AAA	100%	Liquid
Local Authorities	Yellow	100%	5 years

	Minimum credit criteria / colour band	** Max % of total investments / £ limit per institution	Max. maturity period
Term Deposits with Housing Associations	Blue Orange Red Green No Colour		12 months 12 months 6 months 100 days Not for use
Term Deposits with Banks and Building Societies	Blue Orange Red Green No Colour		12 months 12 months 6 months 100 days Not for use
CDs or Corporate Bonds with Banks and Building Societies	Blue Orange Red Green No Colour		12 months 12 months 6 months 100 days Not for use
Gilt Funds	UK sovereign rating		

Approved Countries for Investments

This list is based on those countries which have sovereign ratings of AA- or higher, (we show the lowest rating from Fitch, Moody's and S&P) and also, (except - at the time of writing - for Hong Kong and Luxembourg), have banks operating in sterling markets which have credit ratings of green or above in the Link creditworthiness service.

Based on lowest available rating

AAA

- Australia
- Denmark
- Germany
- Netherlands
- Norway
- Singapore
- Sweden
- Switzerland

AA+

- Canada
- Finland
- U.S.A.

AA

- Abu Dhabi (UAE)

AA-

- Belgium
- France
- Qatar
- **U.K.**

Treasury Management Scheme of Delegation

(i) Full Council

- approval of annual strategy and mid year update and annual report, and
- approval of/amendments to the organisations adopted clauses, treasury management policy, treasury management practices, treasury management indicators and prudential indicators

(ii) Full Council / Cabinet

- budget consideration and approval, and
- receiving and reviewing regular monitoring reports and acting on recommendations,

(iii) Audit Committee

- reviewing the treasury management policy and procedures and making recommendations to the responsible body, Full Council.

The Treasury Management Role of the Section 151 Officer

The S151 (responsible) officer

The Council's S151/Chief Financial Officer has delegated authority for all Treasury Management activities and decisions, including borrowing and investments, as long as they are within the overall approved Treasury Management Strategy.

- Recommending the Treasury Management Strategy, treasury management policy/practices for approval, reviewing the same regularly, and monitoring compliance;
- submitting regular treasury management policy reports;
- submitting budgets and budget variations;
- receiving and reviewing management information reports;
- reviewing the performance of the treasury management function;
- ensuring the adequacy of treasury management resources and skills, and the effective division of responsibilities within the treasury management function;

- ensuring the adequacy of internal audit, and liaising with external audit;
- recommending the appointment of external service providers.

Ethical Investment Framework – Telford and Wrekin Council

At the current time the Council’s treasury activity consists principally of making short-dated loans to the UK Government (through the Debt Management Agency Deposit Facility) and to banks and building societies which adheres to the S-L-Y principles of (Security, Liquidity and Yield, in that order).

The preservation of capital is the Council’s principal and overriding priority. The banks and building societies on the Council’s lending list are selected only if the institutions and the sovereign meet a minimum credit criteria. In accordance with its social and corporate governance responsibilities, the Council seeks to support institutions which additionally have an ethical and responsible approach to environmental and social issues including employment and global trade. These “ethical” criteria and their basis are described below.

1. Environmental and Social Standards

Equator Principles

The Equator Principles (EPs) are a voluntary set of guidelines based on the environmental and social standards practiced by the International Finance Committee when evaluating financing projects. Financial institutions that adopt the Principles agree to use a screening process aiming to ensure that environmental and social assessments help inform decisions to finance development projects. This allows signatories to engage proactively with their stakeholders on environmental and social policy issues.

The EPs are a screening framework for determining, assessing and managing environmental and social risk in project finance transactions for major infrastructure and industrial projects. The EPs are adopted voluntarily by financial institutions and are applied where total project capital costs exceed US\$10 million. The EPs are primarily intended to provide a minimum standard for due diligence to support responsible risk decision-making. They are based on the International Finance Corporation’s performance standards on social and environmental sustainability and on the World Bank Group Environmental Health and Safety Guidelines.

Financial institutions which are signatories to the EPs commit to not providing loans to projects where the borrower will not or is unable to comply with their respective social and environmental policies and procedures that implement the EPs.

The following banks relating to institutions on the Council’s lending list have adopted the Equator Principles:

- Lloyds Banking Group (parent of Bank of Scotland plc and Lloyds Bank plc)
- Banco Santander (parent of Santander UK plc)
- Svenska Handelsbanken AB (parent of Handelsbanken UK)
- Barclays plc (parent of Barclays Bank)
- HSBC Holding plc (parent of HSBC plc)
- Nat West Group plc
- Royal Bank of Scotland

- Standard Chartered plc
- Australia and New Zealand Banking Group
- Commonwealth Bank Australia
- Westpac Banking Corp.
- Bank of Montreal
- Bank of Nova Scotia
- Canadian Imperial Bank of Commerce
- Royal Bank of Canada
- Nordea Bank Finland
- Deutsche Bank AG
- ING Bank NV
- Credit Suisse
- JP Morgan Chase Bank

<http://www.equator-principles.com/index.php/members-reporting>

2. Human Rights, Labour and Environment

The **UN Global Compact** is a strategic policy initiative for businesses that are committed to aligning their operations and strategies with ten universally accepted principles in the areas of human rights, labour, environment and anti-corruption.

Corporations which sign up to the UN Global Compact are encouraged to themselves embrace and in turn, support and enact, within their sphere of influence, a set of core values which are derived from:

- The Universal Declaration of Human Rights
- The International Labour Organization's Declaration on Fundamental Principles and Rights at Work
- The Rio Declaration on Environment and Development
- The United Nations Convention Against Corruption

Human Rights

- Principle 1: Businesses should support and respect the protection of internationally proclaimed human rights; and
- Principle 2: make sure that they are not complicit in human rights abuses.

Labour

- Principle 3: Businesses should uphold the freedom of association and the effective recognition of the right to collective bargaining;
- Principle 4: the elimination of all forms of forced and compulsory labour;
- Principle 5: the effective abolition of child labour; and
- Principle 6: the elimination of discrimination in respect of employment and occupation.

Environment

- Principle 7: Businesses should support a precautionary approach to environmental challenges;
- Principle 8: undertake initiatives to promote greater environmental responsibility; and
- Principle 9: encourage the development and diffusion of environmentally friendly technologies.

Anti-Corruption

- Principle 10: Businesses should work against corruption in all its forms, including extortion and bribery.

The following banks relating to institutions on the Council's lending list are participants/stakeholders of the UN Global Compact:

- Lloyds Banking Group
- Svenska Handelsbanken AB
- Gruppo Santander (ultimate parent of Santander UK plc)
- HSBC
- Royal Bank of Scotland
- Standard Chartered
- Nationwide Building Society
- NatWest Group plc
- The Royal Bank of Scotland Group
- Australia and New Zealand Banking Group
- Commonwealth Bank of Australia
- National Australia Bank
- Westpac Banking Corp.
- Nordea Bank AB
- ING Bank NV
- Rabobank Group
- DBS Bank Ltd
- Credit Suisse

<http://www.unglobalcompact.org/ParticipantsAndStakeholders/index.html>

Limitations to ethical policies:

It should be noted here that the individual institutions which have signed up to the Equator Principles and to the Global Compact screen borrowers before lending for infrastructure and industrial projects.

However, financial institutions also engage daily in money market and interbank lending transactions; the criteria for such lending is based primarily on credit risk assessment (i.e. the assessment of their lending being repaid in full and on time when it is due). Being a signatory to the EPs will not necessarily be a critical feature of such credit assessment and the Council is not in a position to monitor interbank lending. The same applies to an individual financial signing up to the UN Global Compact.

It should also be noted that becoming a signatory of voluntary guidelines (Equator Principle or Global Compact) does not guarantee that that institution's policies and practices are of a better standard than those institutions which are not signatories to the voluntary guidelines.

Activist investment: The Council does not invest directly in shares traded on the markets or in corporate bonds. Not only are such investments inherently higher risk investments, and requires a distinct and separate set of fund management expertise. Under current legislation (SI 2003 No 3146) the purchase of share capital or loan capital of a body corporate is a capital expenditure investment which, on sale or maturity, becomes a capital receipt and is unsuitable for the Council's treasury investments which are primarily the cash management of its operating surpluses and reserves. Corporate bond and equity investments would however be made by the Council's pension fund (run by Shropshire Council).

Other than through its pension fund (which is measured by Shropshire Council), the Council cannot seek to influence decision making at a company by voicing concerns, engaging in a dialogue with management, or lobbying other shareholders for support. Activist investors attempt to purchase sufficient shares or obtain seats on the board with the goal of effecting major change in the company to make the company more valuable financially or socially (for example to change management policies and adopt better governance; optimise shareholder value through acquisitions/divestitures, be more socially responsible etc).

Credit Ratings – A Guide.

Long-term credit ratings and Sovereign Ratings

Fitch Rating's long-term credit ratings are set up along a scale from 'AAA' to 'D', first introduced in 1924 and later adopted and licensed by Standard & Poors (S&P). Moody's also uses a similar scale, but names the categories differently. Like S&P, Fitch also uses intermediate modifiers for each category between AA and CCC (i.e., AA+, AA, AA-, A+, A, A-, BBB+, BBB, BBB- etc.).

Investment grade

- **AAA** : the best quality, reliable and stable
- **AA** : good quality, a bit higher risk than AAA
- **A** : economic situation can affect finance
- **BBB** : medium class counterparties, which are satisfactory at the moment

Non-investment grade

- **BB** : more prone to changes in the economy
- **B** : financial situation varies noticeably
- **CCC** : currently vulnerable and dependent on favourable economic conditions to meet its commitments
- **CC** : highly vulnerable, very speculative bonds
- **C** : highly vulnerable, perhaps in bankruptcy or in arrears but still continuing to pay out on obligations
- **D** : has defaulted on obligations and Fitch believes that it will generally default on most or all obligations
- **NR** : not publicly rated

Short-term credit ratings

Fitch's short-term ratings indicate the potential level of default within a 12-month period.

- **F1+** : best quality grade, indicating exceptionally strong capacity of obligor to meet its financial commitment
- **F1** : best quality grade, indicating strong capacity of obligor to meet its financial commitment
- **F2** : good quality grade with satisfactory capacity of obligor to meet its financial commitment
- **F3** : fair quality grade with adequate capacity of obligor to meet its financial commitment but near term adverse conditions could impact the obligor's commitments
- **B** : of speculative nature and obligor has minimal capacity to meet its commitment and vulnerability to short term adverse changes in financial and economic conditions
- **C** : possibility of default is high and the financial commitment of the obligor are dependent upon sustained, favourable business and economic conditions
- **D** : the obligor is in default as it has failed on its financial commitments.

Support Ratings (1 – 5)

The Purpose and Function of Support Ratings

Support Ratings are Fitch Ratings' assessment of a potential supporter's propensity to support a bank and of its ability to support it. Its propensity to support is a judgment made by Fitch Ratings. Its ability to support is set by the potential supporter's own Issuer Default Ratings, both in foreign currency and, where appropriate, in local currency. Support Ratings do not assess the intrinsic credit quality of a bank. Rather they communicate the agency's judgment on whether the bank would receive support should this become necessary. These ratings are exclusively the expression of Fitch Ratings' opinion even though the principles underlying them may have been discussed with the relevant supervisory authorities and/or owners.

Timeliness and Effectiveness Requirements

Fitch Ratings' Support Rating definitions are predicated on the assumption that any necessary "support" is provided on a timely basis. The definitions are also predicated on the assumption that any necessary support will be sufficiently sustained so that the bank being supported is able to continue meeting its financial commitments until the crisis is over.

Obligations and Financial Instruments Covered

In terms of these definitions, unless otherwise specified, "support" is deemed to be in terms of foreign currency. It is assumed that typically the following obligations will be supported: senior debt (secured and unsecured), including insured and uninsured deposits (retail, wholesale and interbank); obligations arising from derivatives transactions and from legally enforceable guarantees and indemnities, letters of credit, and acceptances; trade receivables and obligations arising from court judgments.

Likewise, the agency does not assume that the following capital instruments will be supported when sovereign support is involved: preference/preferred shares or stock; hybrid capital (tier 1 and upper tier 2), including reserve capital instruments (RCIs) and variations upon RCIs; and common/ordinary equity capital. It is also assumed that there will be no support for any moral obligation on securitizations. The sovereign support status of subordinated debt is difficult to categorize in advance; it is assessed on a case by case basis, distinguishing among different jurisdictions.

Definitions:

- 1:** A bank for which there is an extremely high probability of external support. The potential provider of support is very highly rated in its own right and has a very high propensity to support the bank in question. This probability of support indicates a minimum Long-Term Rating floor of 'A-'.
- 2:** A bank for which there is a high probability of external support. The potential provider of support is highly rated in its own right and has a high propensity to provide support to the bank in question. This probability of support indicates a minimum Long-Term Rating floor of 'BBB-'.

- 3:** A bank for which there is a moderate probability of support because of uncertainties about the ability or propensity of the potential provider of support to do so. This probability of support indicates a minimum Long-Term Rating floor of 'BB-'.
- 4:** A bank for which there is a limited probability of support because of significant uncertainties about the ability or propensity of any possible provider of support to do so. This probability of support indicates a minimum Long-Term Rating floor of 'B'.
- 5:** A bank for which external support, although possible, cannot be relied upon. This may be due to a lack of propensity to provide support or to very weak financial ability to do so. This probability of support indicates a Long-Term Rating floor no higher than 'B-' and in many cases no floor at all.

GLOSSARY

Term	Meaning
Annuity	A method of repaying a loan where the cash payment remains constant over the life of the loan, but the proportion in interest reduces and the proportion of principal repayment increases over time.
Authorised Borrowing Limit	The maximum amount the authority can borrow at any point of time in the year. This limit should never be exceeded. The limit is set by Full Council at the beginning of March and is a prudential indicator.
Bail-in	A method of rescuing a failing financial institution by cancelling some of its deposits and bonds. Investors may suffer a haircut but may be given shares in the bank as part compensation. See also bail-out
Bail-out	A method of rescuing a failing financial institution by the injection of public money. This protects investors at the expense of the taxpayer.
Call account	A deposit account that can be called back, normally on instant access.
Capital Financing Requirement (CFR)	This represents the underlying need for the authority to borrow and represents the assets of the authority less the long term capital liabilities.
Credit Default Swaps (CDS)	CDS are bought by investors to insure against defaults (i.e. the counterparty not being able to repay). The higher the cost/premium then the higher the risk – CDS therefore given a market view of the credit worthiness of an organisation.
Credit Ratings	Rating on the ability of an organisation to meet its obligations; ratings are assigned by independent, specialist companies, such as Fitch and Moody's using market intelligence they gather.
Credit Risk	The risk that the debtor will default on their obligations
Counterparty	The organisation that you are conducting your business with.
Debt Management Account Deposit Facility (H.M. Treasury)	Provided by the Debt Management Office , users can place cash in secure fixed-term deposits. Deposits are guaranteed by the government and therefore have the equivalent of a sovereign triple-A credit rating.
Derivative Instruments	A security whose price is dependent upon or derived from one or more underlying assets. The derivative itself is merely a contract between two or more parties. Its value is determined by fluctuations in the underlying asset. The most common underlying assets include stocks, bonds, commodities, currencies, interest rates and market indexes. Most derivatives are characterized by high leverage. For example, a stock option is a derivative because it derives its value from

Term	Meaning
	the value of a stock. An interest rate swap is a derivative because it derives its value from one or more interest rate indices.
Discounts	These relate to Public Works Loans Board loans. If rates have increased since the borrowing was undertaken then part of the benefit that PWLB will achieve from being able to loan out at that higher rate are passed back to an authority if they repay the loan early.
Fund Managers	Independent investment managers who work to a specific mandate and if appointed invest funds on behalf of the Council
IFRS	International Financial Reporting Standards, the set of accounting rules in use by UK local authorities since 2010.
Inflation	The rise in prices of goods and services over a period of time.
Interest Rate Risk	The risk that the value of an investment will change due to changes to the interest rate.
Internal Borrowing	This is where the amount of an authority's borrowing is less than its CFR or underlying need to borrow and represents the use of internal balances rather than borrowing from the market.
Liquidity Risk	The risk of not being able to trade an investment quickly to release cash.
LOBO	Lender's Option Borrower's Option – a long term loan where the lender has the option to propose an increase in the interest rate on pre-determined dates. The borrower then has the option to either accept the new rate or repay the loan without penalty. LOBOs increase the borrower's interest rate risk and the loan should therefore attract a lower rate of interest initially.
Minimum Revenue Provision (MRP)	This is the amount charged against the Income and Expenditure Account for the year in relation to the repayment of debt on borrowing in order to fund capital expenditure.
Money Market Fund (MMF)	Mutual funds that invest in short term debt instruments. They offer a higher level of security than banks and interest rates are generally higher.
Obligor	An individual or company that owes debt to another individual or company (the creditor), as a result of borrowing or issuing bonds.
Operational Borrowing Limit	The amount the authority would normally borrow at any point of time in the year. This boundary might be exceeded temporarily but only in exceptional circumstances. The limit is set by Full Council at the beginning of March and is a prudential indicator.

Term	Meaning
Premia	This is the penalty applied to the early redemption of PWLB loans where rates have fallen since the loan was undertaken.
Prudential Code	A professional code of practice which provides regulatory framework to local authorities on capital expenditure, investments and borrowing activities.
Prudential Indicators	A set of indicators developed within the Prudential Code which define thresholds for investment and borrowing within a local authority.
PWLB	Public Works Loans Board – a Government agency providing long and short term loans to local authorities. Interest rates are generally lower than the private sector and slightly higher than the rates at which the Government themselves may borrow.
Quantitative Easing	This is where the government buy back their own gilt issuance to effectively pump money into the financial markets of the economy.
Re-scheduling	This relates to repaying existing borrowing early and replacing it with borrowing for a different period usually, but not necessarily, at lower rates
Return	The gain from holding an investment over a given period
Security	An investment instrument, other than an insurance policy or fixed annuity, issued by a corporation, government or other organisation which offers evidence of debt or equity.
SONIA	Sterling Overnight Interbank Average – a key Bank of England interest rate benchmark; it is a measurement of the cost of borrowing and reflects the average of interest that banks pay to borrow sterling overnight from other financial institutions.
Sovereign Exposure	Risk of exposure to one particular country.
Supranational Bonds	These are bonds (similar to gilts) issued by multi government development organisations and are supported by all of the governments who form part of the organisation. E.g. European Investment Bank and are usually very secure.
Treasury Management Code (TM Code)	CIPFA's Code of Practice for Treasury Management in the Public Services and Cross-Sectoral Guidance Notes, to which local authorities are required by law to have regard.